

Multi-User Vacuum Systems for up to ten Users



Chemically-resistant LABOBASE® Vacuum Systems for Multi-User

Technical features:

- Maintenance-free
- Silent
- More room on the laboratory bench
- Fully-automatic vacuum generation for several users
- Vacuum supply points with regulated tapping
- Simple connection to the line power (power plug) and to the pneumatic system
- Environmentally friendly
- Chemically-resistant

Fully-automatic Base Vacuum Station

The concept

A fully-automatic, chemically-resistant base unit supplies vacuum for several laboratory workplaces. This reduces costs and makes more space available on the laboratory bench. The base unit switches itself off automatically when no vacuum is required.

The base vacuum station - compact and fully-automatic

All components of the base unit are located compactly on a base plate.

The vacuum controller of the base station regulates the vacuum pump and the cooling water valve at the high-performance condenser.

The controller is capable of determining:

- lower threshold value (pressure in mbar), the pump switches off
- upper threshold value (pressure in mbar), the pump starts
- switch-off delay (in minutes)
- delay time of the cooling water circuit (in minutes)

LABOBASE base vacuum station - all components on a base plate

System, base vacuum station	Flow rate (l/min) ¹⁾	Ultimate vacuum (mbar abs)	Pneumatic connections for tube ID	Weight (kg)	Included in the system Selection of a vacuum pump	Components (for all base vacuum stations eagle)
SBC 840	34	8	10 mm	22.6	N 840.3 FT.18	Base plate, separator, high performance condenser, vacuum controller, valves and electrical supply unit.
SBC 840.40	34	10	10 mm	22.9	N 840.3 FT.40.18	
SBC 844	40	2	10 mm	23.4	N 844.3 FT.18	
SBC 844.40	40	4	10 mm	23.7	N 844.3 FT.40.18	
SBC 860	60	2	10 mm	25.0	N 860.3 FTE	
SBC 860.40	60	4	10 mm	25.3	N 860.3 FT.40E	

¹⁾ at atm. pressure

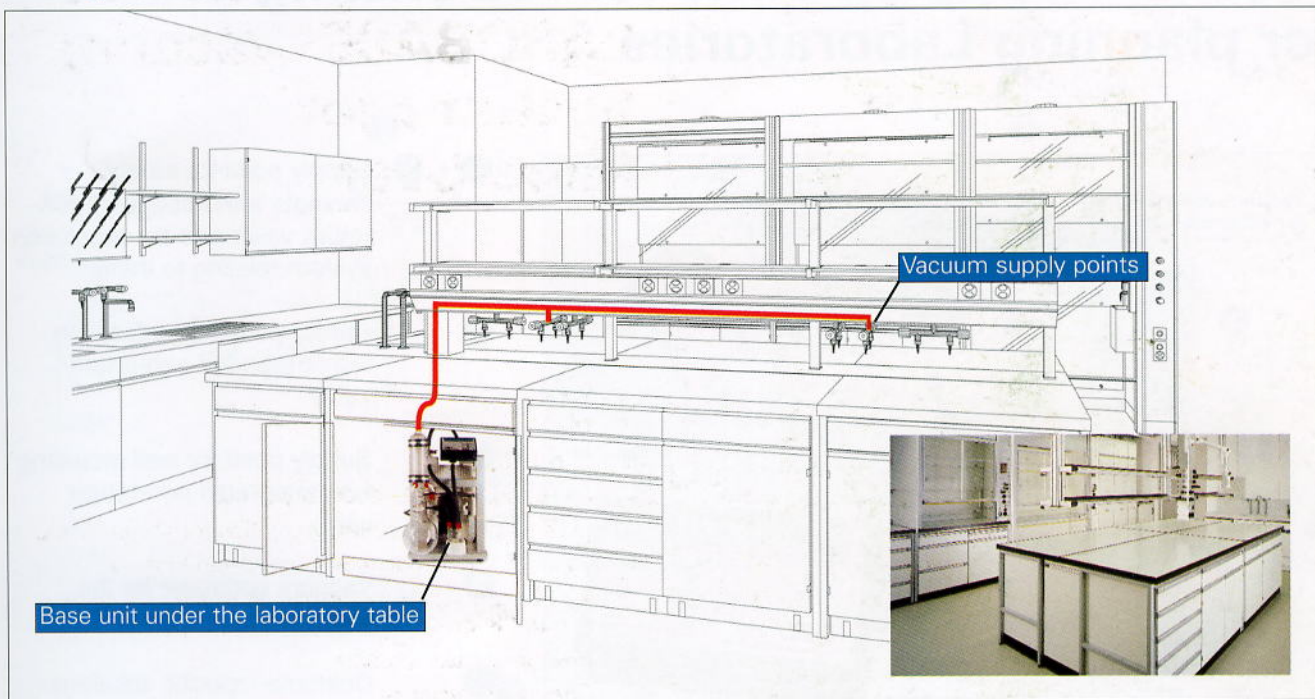
Accessories for LABOBASE base vacuum station

Order No.	Description	Details
045886	gas washing bottle	0.5 liter

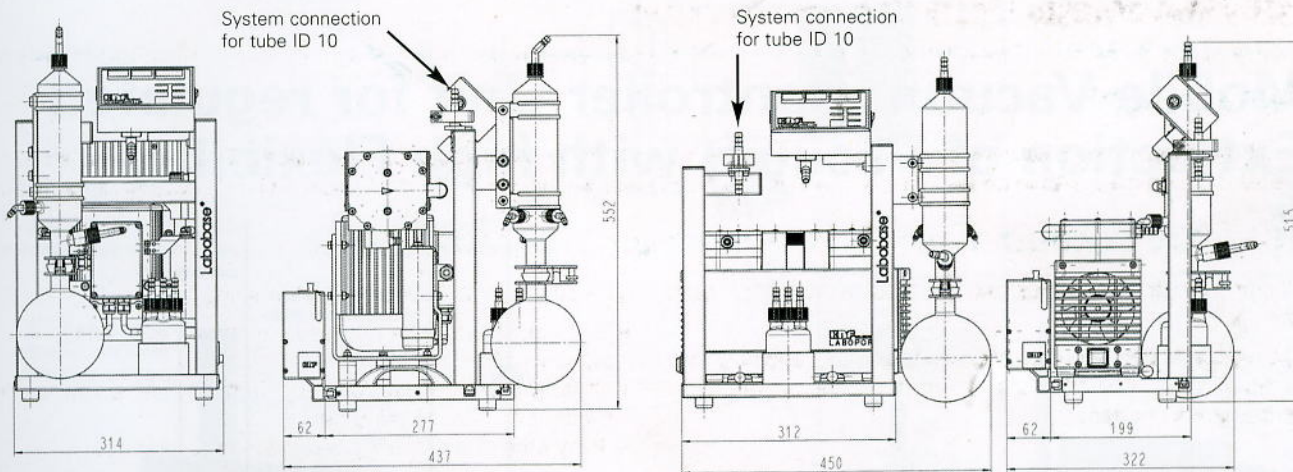
KNF reserves the right to make changes.

Multi-User Vacuum Systems for up to ten Users

Easily built into laboratories



Dimensions (mm)



Systems SBC 860, 860.40

Systems SBC 840, 844, 840.40, 844.40

Vacuum supply points for LABOBASE systems

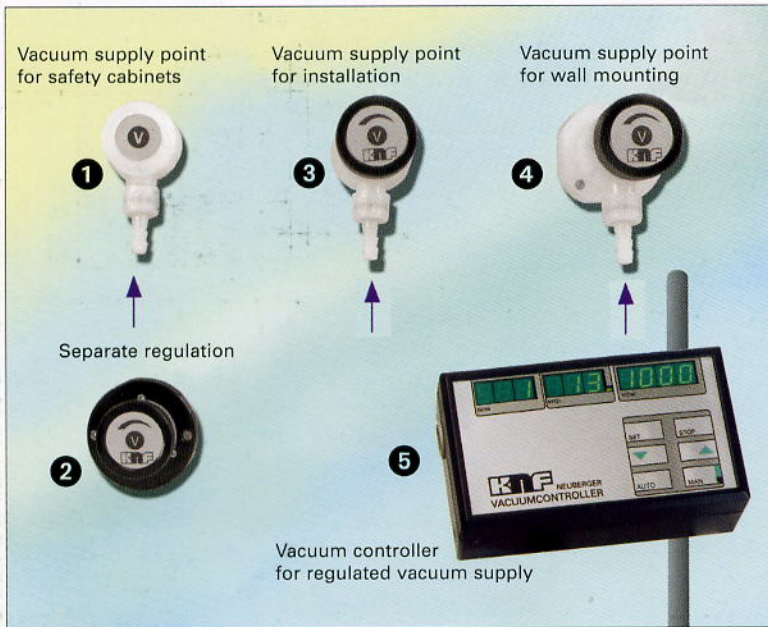
Order No.	Description	Details	Picture-No. (look on the next pages)
048461	vacuum supply point	unregulated, for safety cabinets (PVDF)	1 + 2
048723	vacuum supply point	unregulated, for installation in laboratory equipment (PVDF)	3
048329	vacuum supply point	unregulated, for wall mounting (surface mounting) (PVDF)	4
048459	mobile controller unit	for regulated vacuum supply (chemical-resistant)	6

For more information on vacuum supply points, refer to the following pages!

KNF worldwide - Diaphragm Pumps and Systems

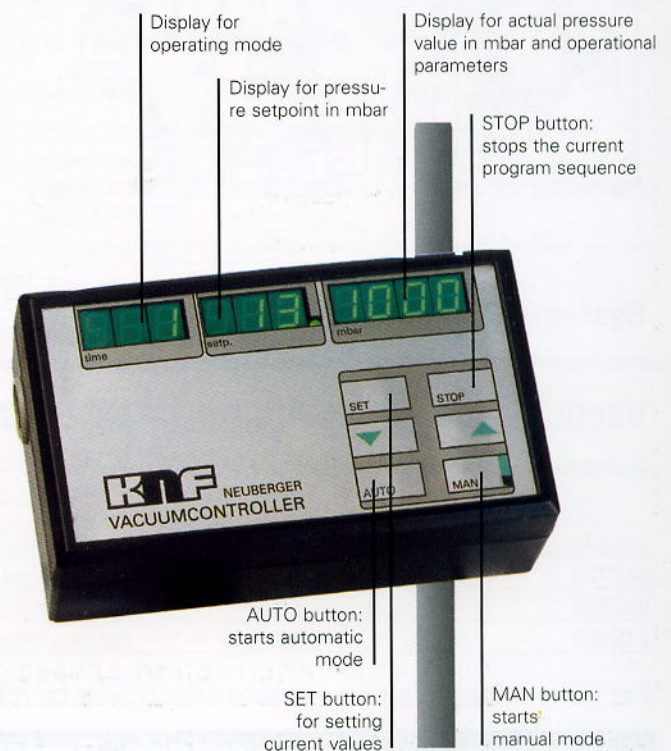
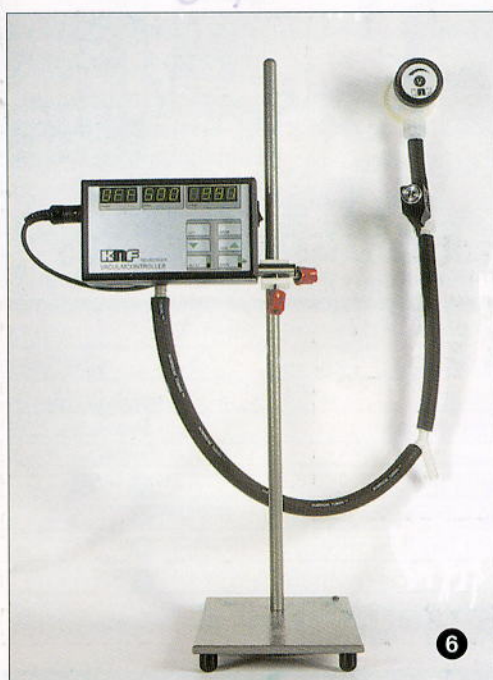
Multi-User Vacuum Systems for up to ten Users

Vacuum Supply Points for retrofitting or planning Laboratories



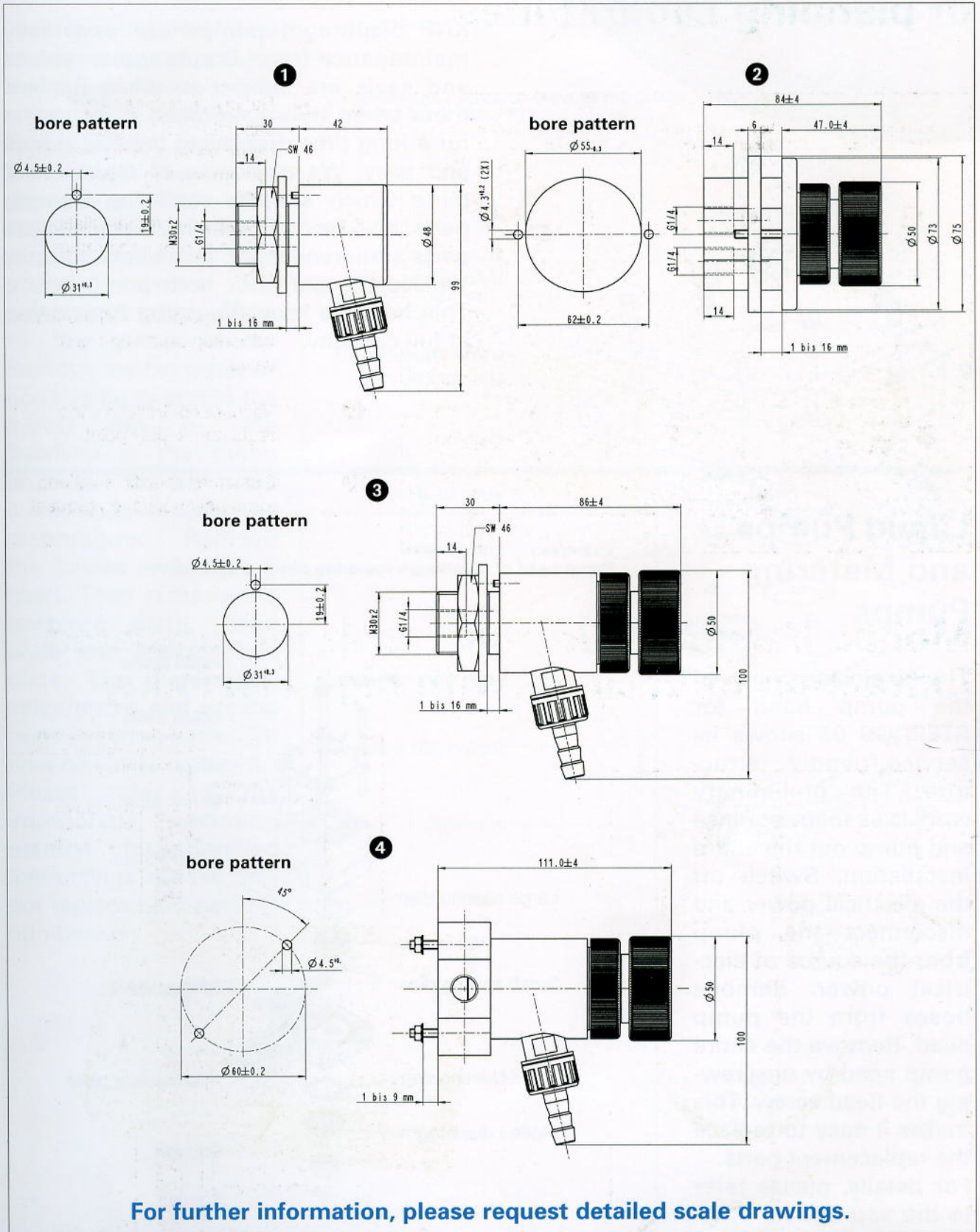
- 1 + 2 Supply point for safety cabinets with integrated non-return valve and the regulation system relating to them
- 3 Supply point for installation with integrated non-return valve
- 4 Supply point for wall mounting with integrated non-return valve
- 5 Vacuum controller for the regulated supply point
- Customer-specific solutions for supply points, on request

Mobile Vacuum Controller Unit for regulated Extraction of Vacuum with high Flexibility



Multi-User Vacuum Systems for up to ten Users

Installation dimensions of the vacuum supply points



For further information, please request detailed scale drawings.

7